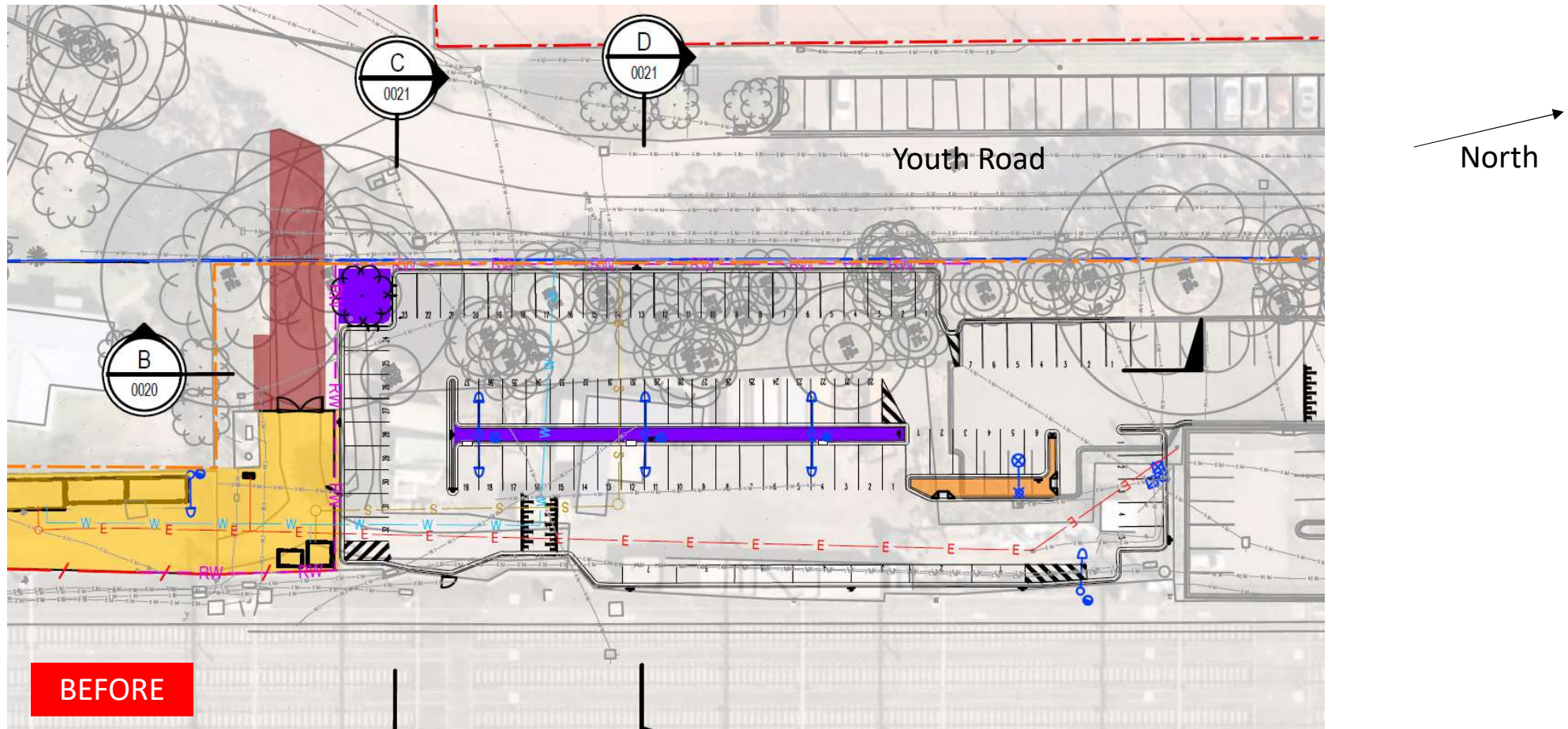


**Issue:** Impacts on vegetation #1 – Detailed design drawing on which Council Submission was based

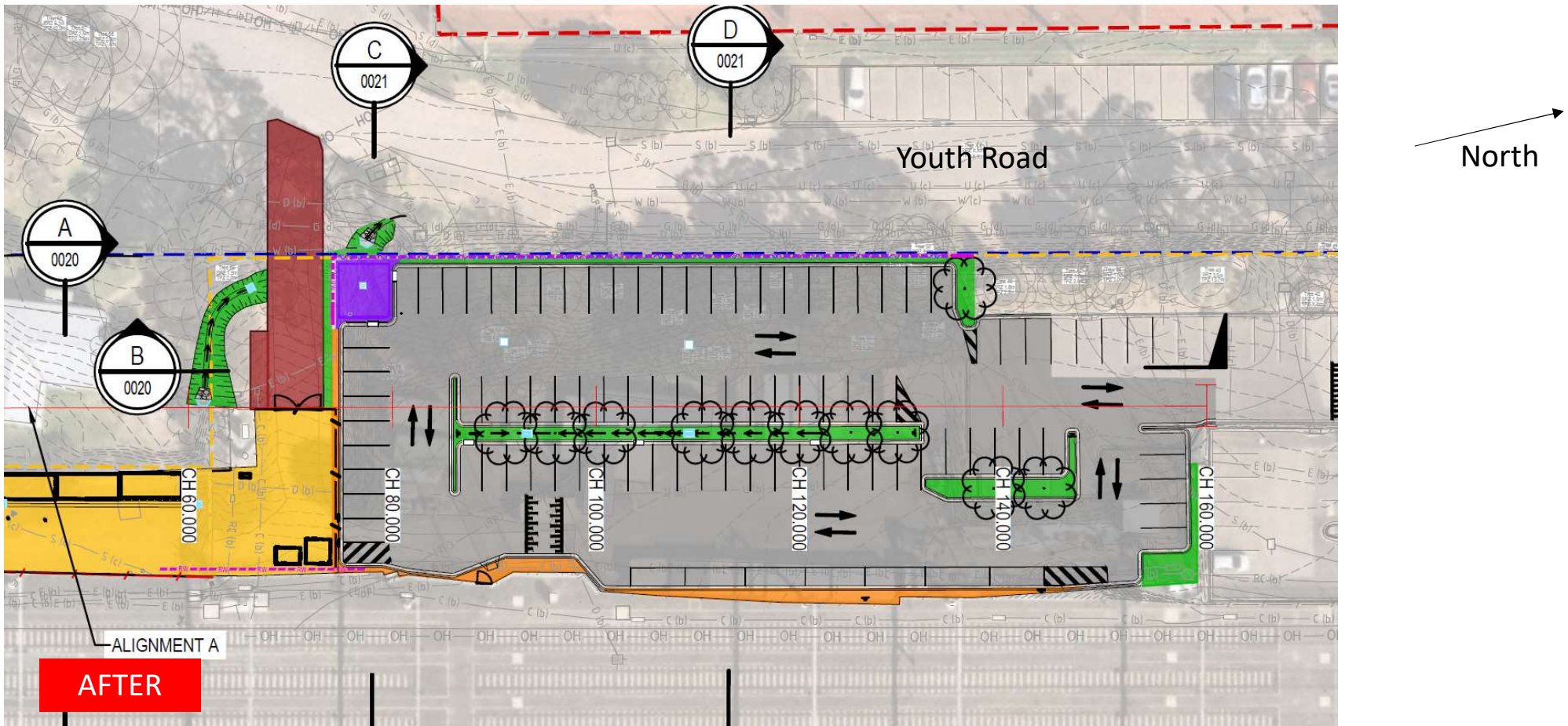
**Location:** Southern end of Youth Road (current screening to Metro maintenance yard)



LXRP drawing, August 2021

**Issue:** Impacts on vegetation #1 – Current drawing from LXP

**Location:** Southern end of Youth Road (current screening to Metro maintenance yard)



LXP drawing, 24 January 2022



**Issue:** Impacts on vegetation #1

**Location:** Southern end of Youth Road (current screening to Metro maintenance yard)



Aerial image overlaid LXP draft drawing showing vegetation impacts



**Issue:** Impacts on vegetation #1

**Location:** Southern end of Youth Road (current screening to Metro maintenance yard)

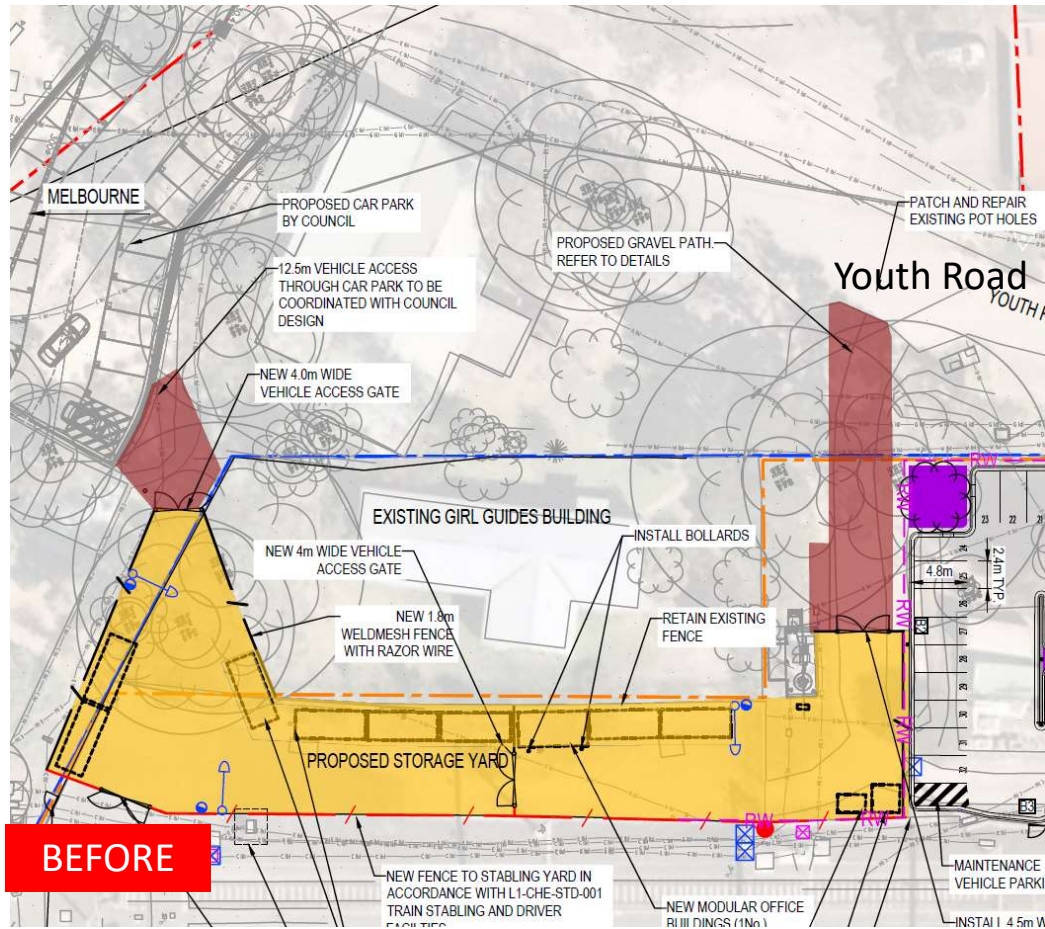


Site photo taken 7 December 2021 showing vegetation impacts



**Issue:** Impacts on vegetation #2 – Detailed design drawing on which Council Submission was based

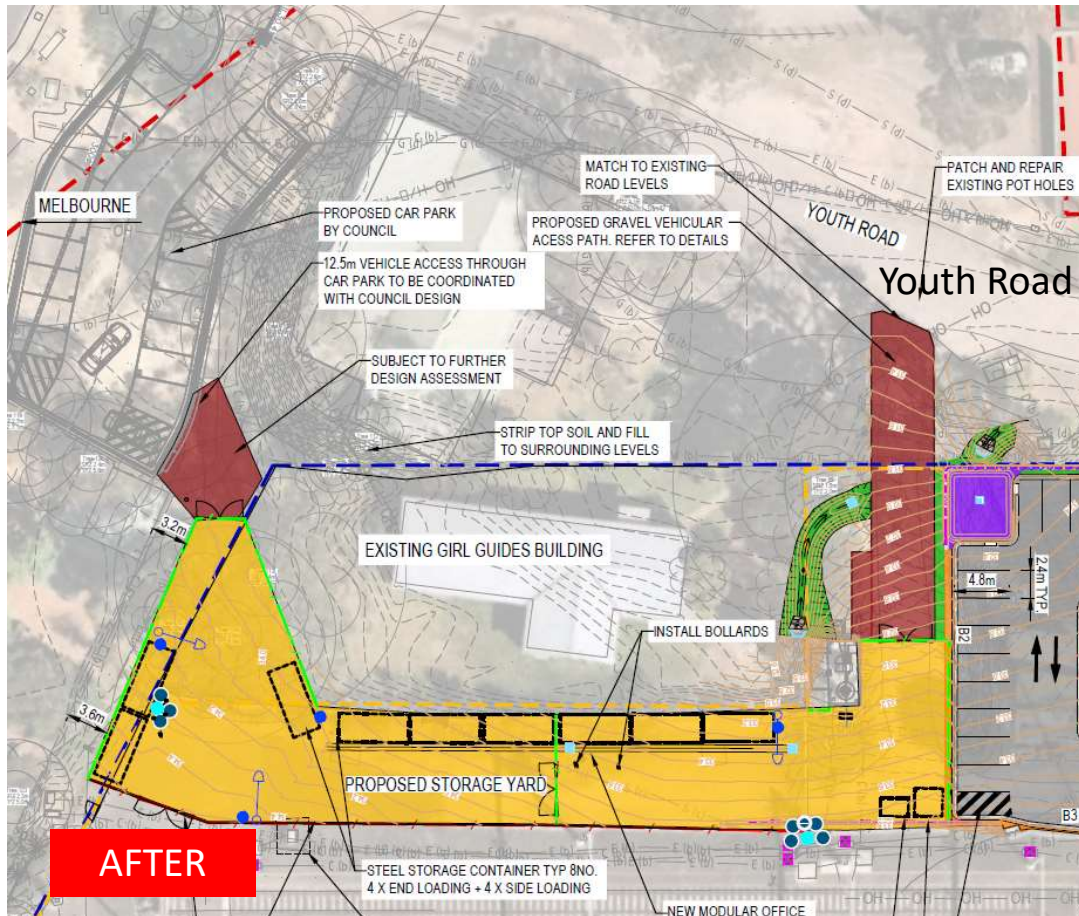
**Location:** Abutting the Eltham Childcare Co-operative



LXRP drawing, August 2021

**Issue:** Impacts on vegetation #2 – Current drawing from LXP

**Location:** Abutting the Eltham Childcare Co-operative

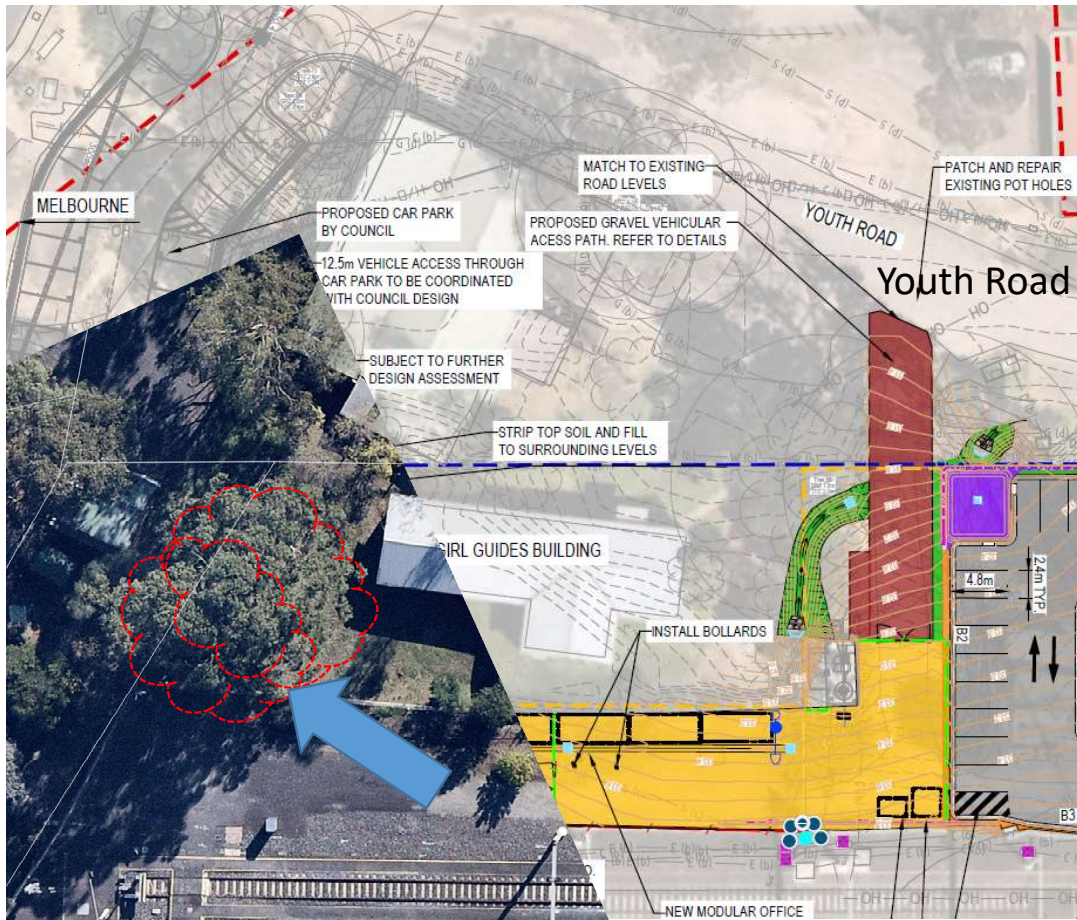


LXP drawing, 24 January 2022



## Issue: Impacts on vegetation #2

**Location:** Abutting the Eltham Childcare Co-operative



Aerial image overlaid LXP draft drawing showing vegetation impacts

**Issue:** Impacts on vegetation #2

**Location:** Abutting the Eltham Childcare Co-operative

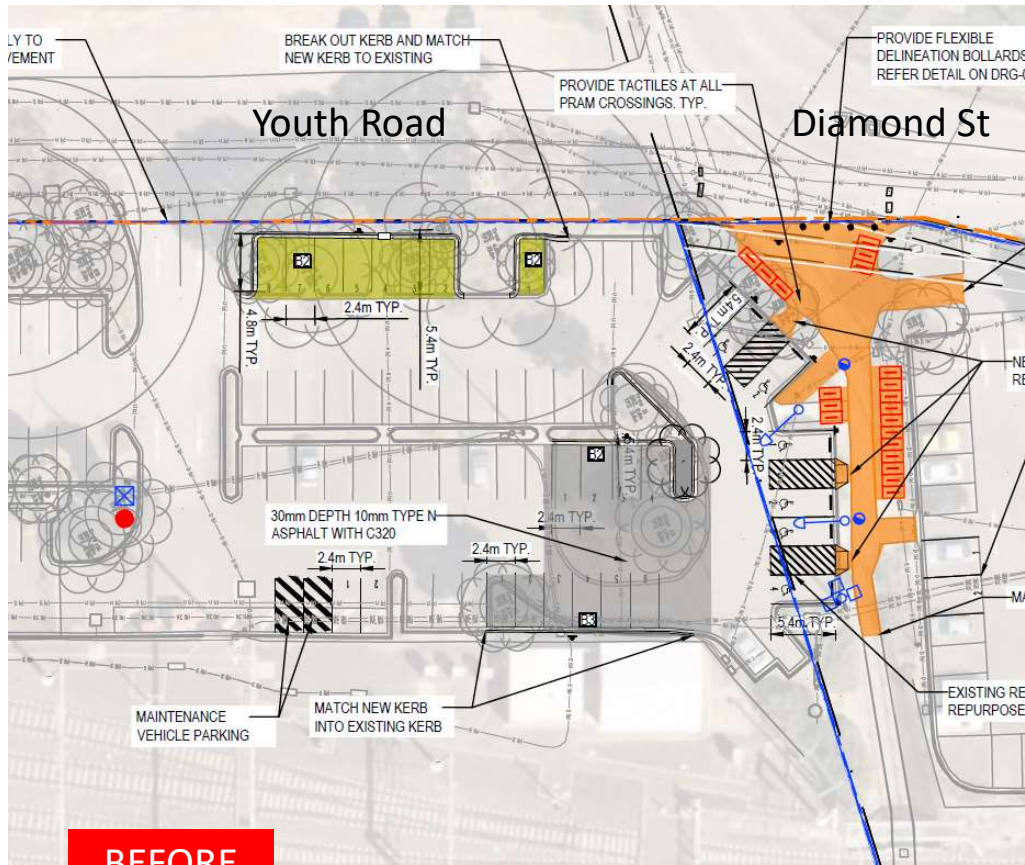


Site photo taken 7 December 2021 showing vegetation impacts



**Issue:** Impacts on vegetation #3 – Detailed design drawing on which Council Submission was based

**Location:** Northern end of Youth Road (current trees in car park)

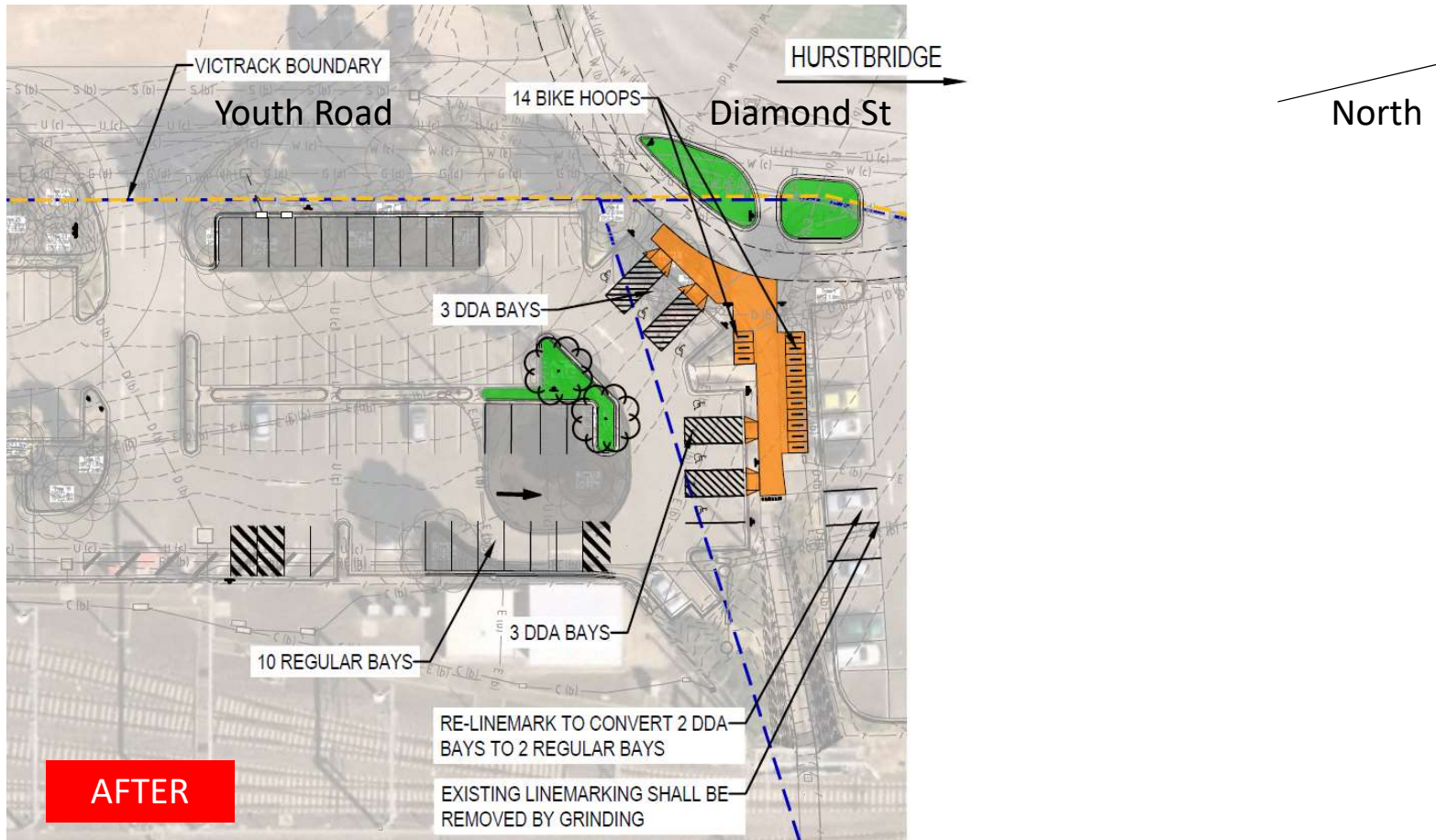


**BEFORE**

LXRP drawing, August 2021

**Issue:** Impacts on vegetation #3 – Current drawing from LXP

**Location:** Northern end of Youth Road (current trees in car park)



LXP drawing, 24 January 2022



**Issue:** Impacts on vegetation #3

**Location:** Northern end of Youth Road (current trees in car park)



Aerial image overlaid LXP draft drawing showing vegetation impacts

**Issue:** Impacts on vegetation #3

**Location:** Northern end of Youth Road (current trees in car park)

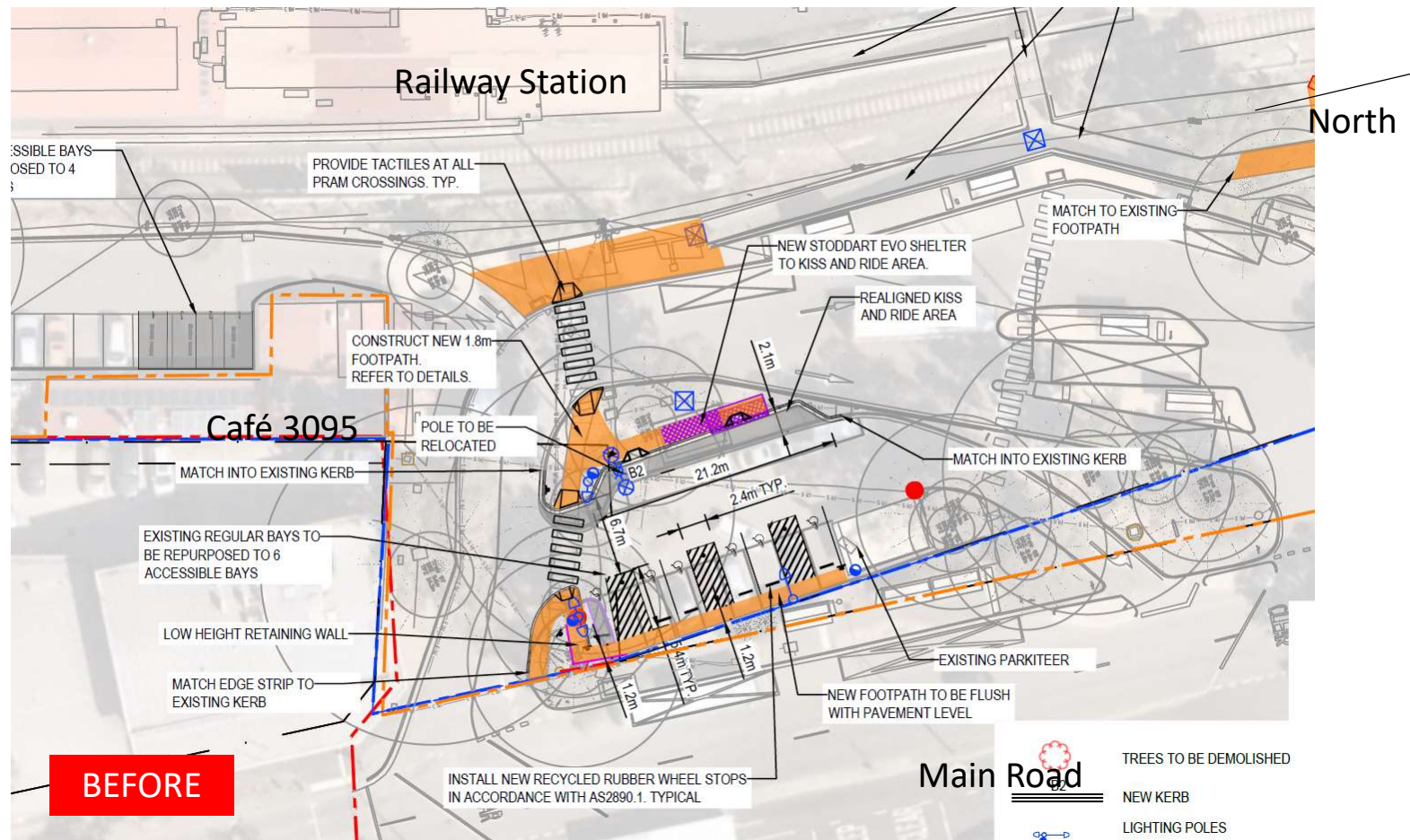


Site photo taken 3 August 2021 showing vegetation impacts



**Issue:** Impacts on vegetation #4 – Detailed design drawing on which Council Submission was based

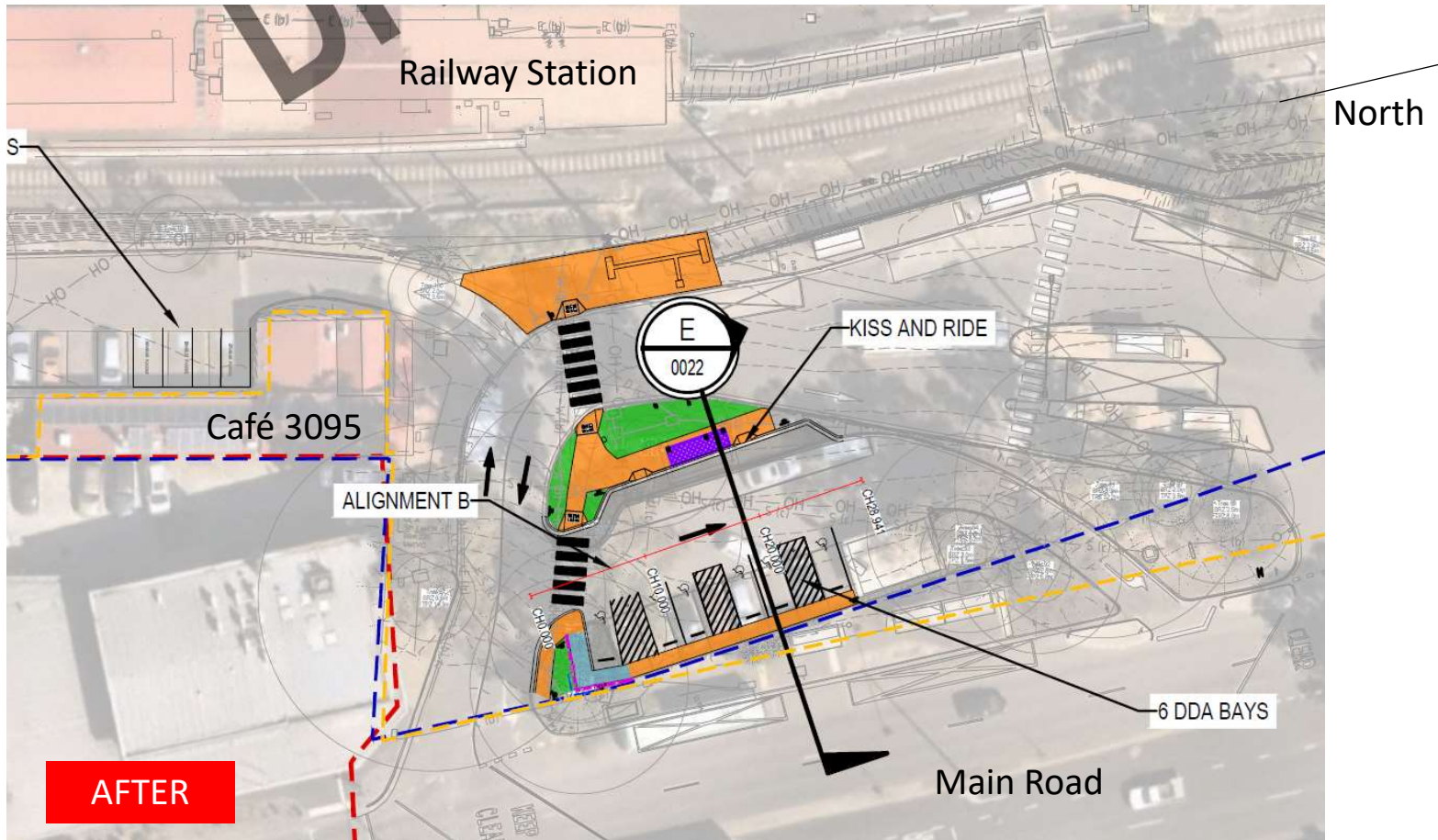
**Location:** Main Road in Eltham (current trees in kiss and ride area)



LXRP drawing, August 2021

**Issue:** Impacts on vegetation #4 – Current drawing from LXP

**Location:** Main Road in Eltham (current trees in kiss and ride area)

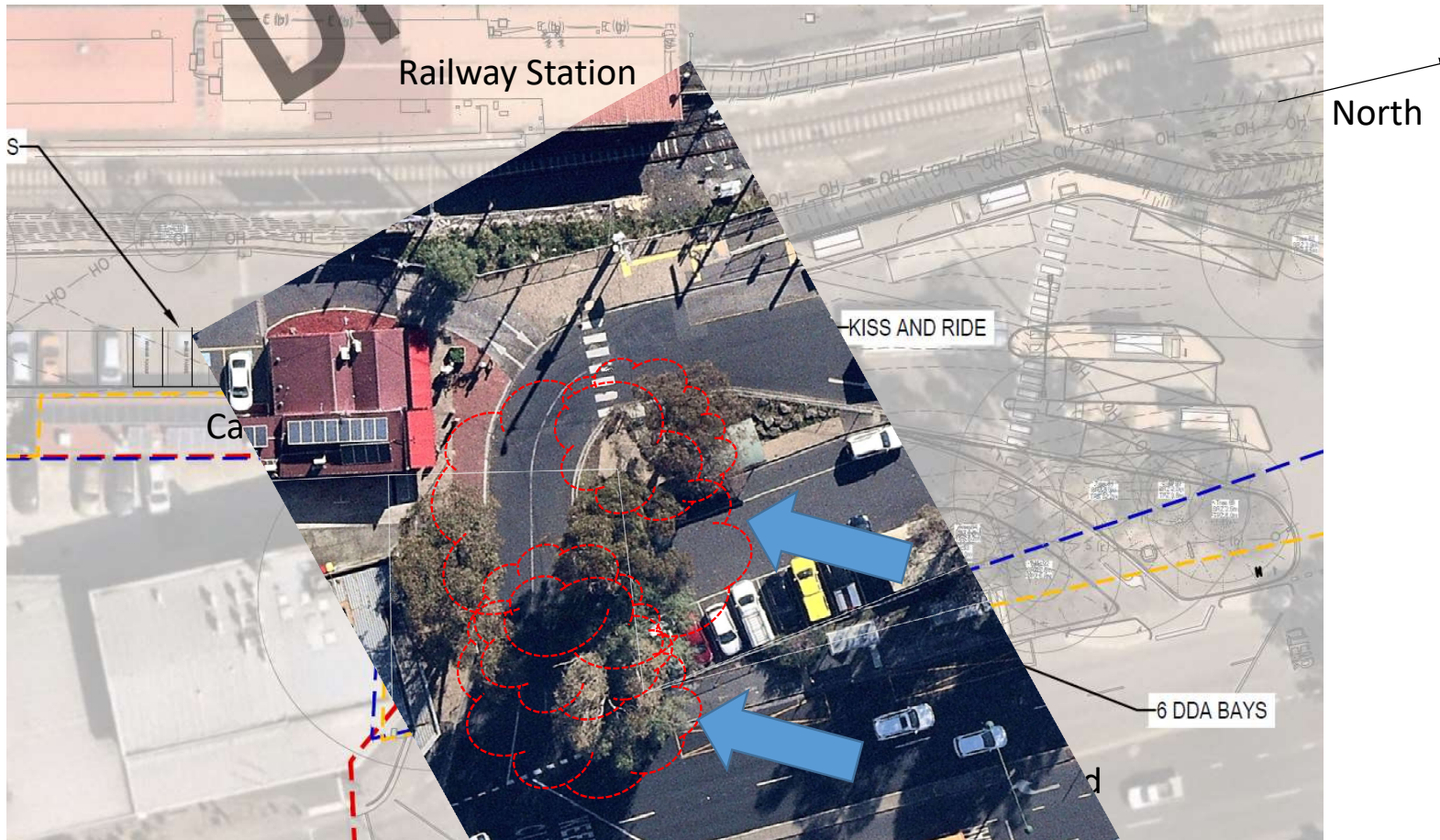


LXP drawing, 24 January 2022



**Issue:** Impacts on vegetation #4

**Location:** Main Road in Eltham (current trees in kiss and ride area)



Aerial image overlaid LXP draft drawing showing vegetation impacts



**Issue:** Impacts on vegetation #4

**Location:** Main Road in Eltham (current trees in kiss and ride area)



Site photo taken 3 August 2021 showing vegetation impacts